

RED-EMC Test Report

Report No. : 1812C50282912501E

Applicant : XXXXXXXXXXXXXXXXXXXXXXXXXXXXXXXXXXXX

Address : XXXXXXXXXXXXXXXXXXXXXXXXXXXXXXXXXXXX
XX
XXXXXXXXXXXXXXXXXXXXXXXXXXXX China XXXXXXXX

Product Name : Wireless Power Bank

Report Date : 2025-07-21

Shenzhen Anbotek Compliance Laboratory Limited



Contents

1. General Information.....	5
1.1. Client Information.....	5
1.2. Description of Device (EUT).....	5
1.3. Auxiliary Equipment Used During Test.....	6
1.4. Description of Test Modes.....	6
1.5. Test Equipment List.....	7
1.6. Description of Test Facility	9
1.7. Disclaimer	9
1.8. Measurement Uncertainty	9
2. Summary of Test Results	10
3. Emission Test.....	11
3.1. Power Line Conducted Emission Test	11
3.1.1. Test Standard and Limit	11
3.1.2. Test Setup	11
3.1.3. Test Procedure	12
3.1.4. Test Data	12
3.2. Wired Network Ports Conducted Emission Test.....	15
3.2.1. Test Standard and Limit	15
3.2.2. Test Setup	15
3.2.3. Test Procedure	16
3.2.4. Test Results	16
3.3. Radiated Emission Test.....	17
3.3.1. Test Standard and Limit	17
3.3.2. Test Setup	18
3.3.3. Test Procedure	20
3.3.4. Test Data	20
4. Immunity Test.....	23
4.1. Electrostatic Discharge Test	24
4.1.1. Test Standard and Specification	24
4.1.2. Test Setup	24
4.1.3. Test Procedure	25
4.1.4. Test Data	25
4.2. Radiated, RF Electromagnetic Fields Test	27
4.2.1. Test Standard and Specification	27
4.2.2. Test Setup	27
4.2.3. Test Procedure	27
4.2.4. Test Data	28
APPENDIX I -- TEST SETUP PHOTOGRAPH	29
APPENDIX II -- EXTERNAL PHOTOGRAPH	31
APPENDIX III -- INTERNAL PHOTOGRAPH	34

TEST REPORT

Applicant : XX
Manufacturer : XX
Product Name : Wireless Power Bank
Model No. : MPB40
Trade Mark : N/A
Input: 5V=3A, 9V=2A, 12V=1.5A
Output: 5V=3A, 9V=2.22A, 12V=1.67A
Rating(s) : Wireless output: 5W/7.5W/10W/15W
Total Output:5V=3A
Battery Capacity:5000mAh 3.85V 19.25Wh

Test Standard(s) : **ETSI EN 301 489-1 V2.2.3 (2019-11)**
ETSI EN 301 489-3 V2.3.2 (2023-01)
EN 55032: 2015+A1:2020
EN 55035: 2017+A11:2020

The device described above is tested by Shenzhen Anbotek Compliance Laboratory Limited to determine the maximum emission levels emanating from the device and the severe levels of the device can endure and its performance criterion. The measurement results are contained in this test report and Shenzhen Anbotek Compliance Laboratory Limited is assumed full of responsibility for the accuracy and completeness of these measurements. Also, this report shows that the EUT (Equipment Under Test) is technically compliant with the EN 301 489-1, EN 301 489-3, EN 55032 & EN 55035 requirements. This report applies to above tested sample only and shall not be reproduced in part without written approval of Shenzhen Anbotek Compliance Laboratory Limited.

Date of Receipt 2025-06-11

Date of Test 2025-06-11 to 2025-07-17

Prepared By

Macy Ling

(Macy Ling)

Approved & Authorized Signer

KingKong Jin

(KingKong Jin)

Revision History

Report Version	Description	Issued Date
R00	Original Issue.	2025-07-21

Shenzhen Anbotek Compliance Laboratory Limited

1. General Information

1.1. Client Information

Applicant	:	XXXXXXXXXXXXXXXXXXXXXXXXXXXXXXXXXXXX
Address	:	XX XX China XXXX
Manufacturer	:	XXXXXXXXXXXXXXXXXXXXXXXXXXXXXXXXXXXX
Address	:	XX XX China XXXX
Factory	:	XXXXXXXXXXXXXXXXXXXXXXXXXXXXXXXXXXXX
Address	:	XX XX China XXXX

1.2. Description of Device (EUT)

Product Name	:	Wireless Power Bank
Model No.	:	MPB40
Trade Mark	:	N/A
Test Power Supply	:	AC 230V, 50Hz for adapter
Test Sample No.	:	1-2-1(Normal Sample), 1-2-2(Engineering Sample)
Adapter	:	N/A
WPT		
Operation Frequency	:	112~205 kHz
Modulation Type	:	ASK
Remark: 1) All of the RF specification are provided by customer. 2) For a more detailed features description, please refer to the manufacturer's specifications or the User's Manual.		

1.3. Auxiliary Equipment Used During Test

Title	Manufacturer	Model No.	Serial No.
Xiaomi 33W adapter	Xiaomi	MDY-11-EX	SA62212LA04358J
Wireless load	BAECOAR	15W Smart wireless charger fixture wireless charging	/

1.4. Description of Test Modes

To investigate the maximum EMI emission characteristics generates from EUT, the test system was pre-scanning tested base on the consideration of following EUT operation mode or test configuration mode which possible have effect on EMI emission level. Each of these EUT operation mode(s) or test configuration mode(s) mentioned bellow was evaluated respectively.

Test Mode	Description	Test Standards
Mode 1	Adapter+WPT Mode	EN 301489-3
Mode 2	Adapter+WPT Mode	EN55032 or EN55035



1.5. Test Equipment List☒ Power Line Conducted Emission Measurement

Item	Equipment	Manufacturer	Model No.	Serial No.	Last Cal.	Cal. Interval
1.	L.I.S.N. Artificial Mains Network	Rohde & Schwarz	ENV216	100055	2024-09-09	1 Year
2.	Three Phase V- type Artificial Power Network	CYBERTEK	EM5040DT	E215040DT0 01	2025-01-13	1 Year
3.	EMI Test Receiver	Rohde & Schwarz	ESCI	100627	2025-01-13	1 Year
4.	Software Name EZ-EMC	Farad Technology	ANB-03A	N/A	N/A	N/A

☐ Wired Network Ports Conducted Emission Measurement

Item	Equipment	Manufacturer	Model No.	Serial No.	Last Cal.	Cal. Interval
1.	ISN	Schwarzbeck	NTFM 8158	#172	2025-01-13	1 Year
2.	EMI Test Receiver	Rohde & Schwarz	ESCI	100627	2025-01-13	1 Year
3.	Software Name EZ-EMC	Farad Technology	ANB-03A	N/A	N/A	N/A
4.	Three Phase V- type Artificial Power Network	CYBERTEK	EM5040DT	E215040DT0 01	2025-01-13	1 Year

☒ Radiated Emission Measurement

Item	Equipment	Manufacturer	Model No.	Serial No.	Last Cal.	Cal. Interval
1.	EMI Test Receiver	Rohde & Schwarz	ESR26	101481	2025-01-14	1 Year
2.	Bilog Broadband Antenna	Schwarzbeck	VULB9163	345	2022-10-23	3 Year
3.	Pre-amplifier	SONOMA	310N	186860	2025-01-14	1 Year
4.	Software Name EZ-EMC	Farad Technology	ANB-03A	N/A	N/A	N/A

110 / A



☒ Electrostatic Discharge Measurement

Item	Equipment	Manufacturer	Model No.	Serial No.	Last Cal.	Cal. Interval
1.	ESD Simulators	emtest	ESD NX30.1	11936	2025-03-03	1 Year

☒ R/S Immunity Measurement

Item	Equipment	Manufacturer	Model No.	Serial No.	Last Cal.	Cal. Interval
1.	Signal Generator	Agilent	N5181A	MY50143107	2025-01-13	1 Year
2.	Power Meter	Agilent	E4417A	MY45101384	2025-01-13	1 Year
3.	Amplifier	Micotop	MPA-80-1000-600	MPA2110318	2025-01-13	1 Year
4.	Amplifier	Micotop	MPA-1000-6000-100	MPA2110327	2025-01-13	1 Year
5.	Log.-Per.-Antenna	Schwarzbeck	VULP 9118E	01012	N/A	N/A
6.	Microwave Log.-Per. Antenna	Schwarzbeck	STLP 9149	00788	N/A	N/A
7.	Power Sensor	KEYSIGHT	E9323A	US40410647	2025-01-13	1 Year
8.	Power Sensor	KEYSIGHT	E9323A	MY53100007	2025-01-13	1 Year
9.	Electric field Probe	Narda S.T.S /PMM	EP 601	811ZX10351	2025-01-13	1 Year
10.	Software	EMtrace	EM 3	/	N/A	N/A

11311

1.6. Description of Test Facility

The test facility is recognized, certified, or accredited by the following organizations:

FCC-Registration No.: 279531

Shenzhen Anbotek Compliance Laboratory Limited, EMC Laboratory has been registered and fully described in a report filed with the (FCC) Federal Communications Commission. The acceptance letter from the FCC is maintained in our files. Registration No. 279531.

Test Location

Shenzhen Anbotek Compliance Laboratory Limited.

Sogood Industrial Zone Laboratory & 1/F. of Building D, Sogood Science and Technology Park, Sanwei Community, Hangcheng Subdistrict, Bao'an District, Shenzhen, Guangdong, China.

1.7. Disclaimer

1. The test report is invalid if not marked with the signatures of the persons responsible for preparing and approving the test report.
2. The test report is invalid if there is any evidence and/or falsification.
3. The results documented in this report apply only to the tested sample, under the conditions and modes of operation as described herein.
4. This document may not be altered or revised in any way unless done so by Anbotek and all revisions are duly noted in the revisions section.
5. Content of the test report, in part or in full, cannot be used for publicity and/or promotional purposes without prior written approval from the laboratory.
6. The authenticity of the information provided by the customer is the responsibility of the customer and the laboratory is not responsible for its authenticity.
7. The data in this report will be synchronized with the corresponding national market supervision and management departments and cross-border e-commerce platforms as required by regulatory agencies.

The laboratory is only responsible for the data released by the laboratory, except for the part provided by the applicant.

1.8. Measurement Uncertainty

Parameter	Uncertainty
Conducted emissions (AMN 150kHz~30MHz)	3.2dB
Conducted emissions (AAN 150kHz~30MHz)	3.2dB
Radiated emissions (30MHz~1000MHz)	Horizontal: 3.70dB; Vertical: 4.42dB
Radiated emissions (above 1GHz)	1G-6GHz: 4.64dB 6G-18GHz: 4.82dB
The measurement uncertainty and decision risk evaluated according to AB/WI-RF-F-032. This uncertainty represents an expanded uncertainty expressed at approximately the 95% confidence level using a coverage factor of k=2.	

2. Summary of Test Results

EMC Emission			
Test Items	Standard	Basic Standard	Results
Conducted Emission (Power Line)	ETSI EN 301 489-1 V2.2.3 Clause 8.3 & 8.4	EN 55032	PASS
Conducted Emission (Wired network ports)	ETSI EN 301 489-1 V2.2.3 Clause 8.7	EN 55032	N/A
Radiated Emission	ETSI EN 301 489-1 V2.2.3 Clause 8.2	EN 55032	PASS
Harmonic Current Emission	ETSI EN 301 489-1 V2.2.3 Clause 8.5	EN IEC 61000-3-2	N/A
Voltage Fluctuations&Flicker	ETSI EN 301 489-1 V2.2.3 Clause 8.6	EN 61000-3-3	N/A
EMC Immunity			
Test Items	Standard	Basic Standard	Results
Electrostatic Discharge	ETSI EN 301 489-1 V2.2.3 Clause 9.3	EN 61000-4-2	PASS
RF Electromagnetic Field	ETSI EN 301 489-1 V2.2.3 Clause 9.2	EN 61000-4-3	PASS
Fast transients, common mode	ETSI EN 301 489-1 V2.2.3 Clause 9.4	EN 61000-4-4	N/A
Surges	ETSI EN 301 489-1 V2.2.3 Clause 9.8	EN 61000-4-5	N/A
Radio frequency, common mode	ETSI EN 301 489-1 V2.2.3 Clause 9.5	EN 61000-4-6	N/A
Volt. Interruptions Volt. Dips	ETSI EN 301 489-1 V2.2.3 Clause 9.7	EN 61000-4-11	N/A
Transients and surges in the vehicular environment	ETSI EN 301 489-1 V2.2.3 Clause 9.6	ISO 7637-2	N/A
Note: (1) "N/A" denotes test is not applicable in this Test Report.			



3. Emission Test

3.1. Power Line Conducted Emission Test

3.1.1. Test Standard and Limit

Test Standard	ETSI EN 301 489-1 Clause 8.3 & 8.4
Basic Standard	EN 55032

☐ Limits for conducted emission at the AC mains power ports of Class A equipment

Frequency (MHz)	Limits (dB μ V)	
	Quasi-peak Level	Average Level
0.15 ~ 0.50	79.0	66.0
0.50 ~ 30.00	73.0	60.0

Remark: The lower limit shall apply at the transition frequencies.

☐ Limits for conducted emission at the AC mains power ports of Class B equipment

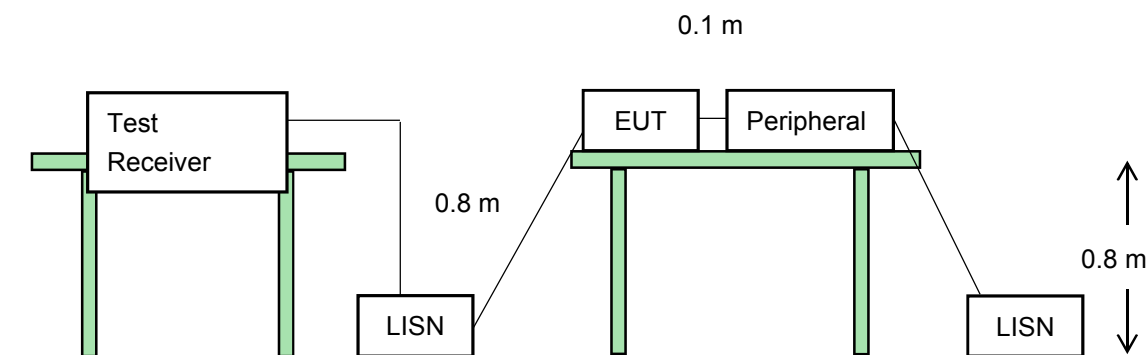
Frequency (MHz)	Limits (dB μ V)	
	Quasi-peak Level	Average Level
0.15 ~ 0.50	66.0 ~ 56.0 *	56.0 ~ 46.0 *
0.50 ~ 5.00	56.0	46.0
5.00 ~ 30.00	60.0	50.0

Remark:

(1) The lower limit shall apply at the transition frequencies.

(2) The limit decreases linearly with the logarithm of the frequency in the range 0.15MHz to 0.50MHz.

3.1.2. Test Setup



3.1.3. Test Procedure

The EUT system is connected to the power mains through a line impedance stabilization network (L.I.S.N.). This provides a 50ohm coupling impedance for the EUT system. Please refer the block diagram of the test setup and photographs. Both sides of AC line are checked to find out the maximum conducted emission. In order to find the maximum emission levels, the relative positions of equipment and all of the interface cables shall be changed according to ETSI EN 301 489-1 & EN55032 on Conducted Emission Measurement.

The bandwidth of test receiver (ESCI) set at 9kHz.

The frequency range from 150kHz to 30MHz is checked.

3.1.4. Test Data

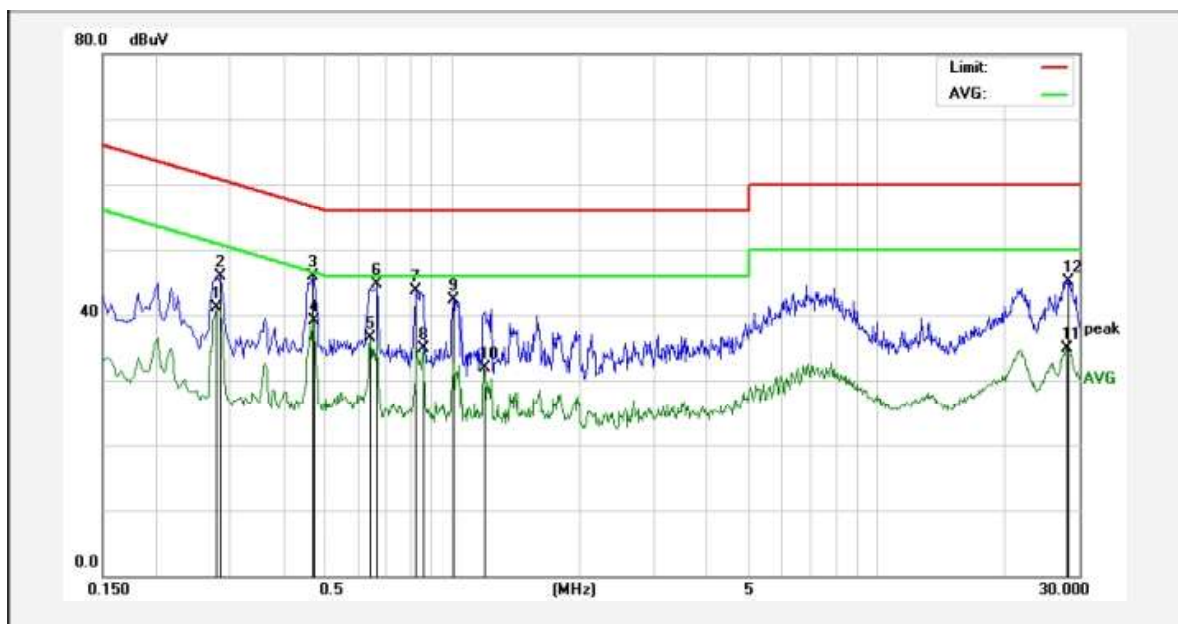
Only the worst case data was showed in the report, please to see the following pages.

11 2 3 4 5 6 7 8 9 10 11 12 13 14 15 16 17 18 19 20 21 22 23 24 25 26 27 28 29 30 31 32 33 34 35 36



Conducted Emission Test Data

Test Site: 1# Shielded Room
 Operating Condition: Mode 2
 Test Specification: AC 230V, 50Hz for adapter
 Comment: Live Line
 Temp.(°C)/Hum.(%RH): 26.3°C/59%RH



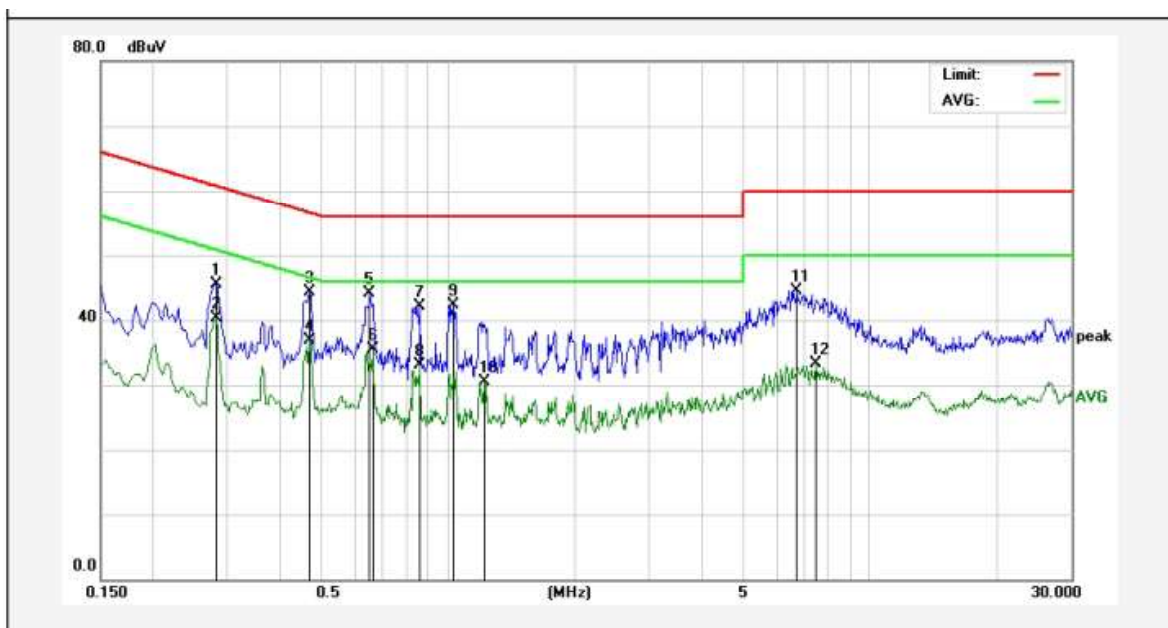
No.	Freq. (MHz)	Reading (dBuV)	Factor (dB)	Result (dBuV)	Limit (dBuV)	Over Limit (dB)	Detector	Remark
1	0.2779	23.36	17.83	41.19	50.88	-9.69	AVG	
2	0.2860	28.13	17.83	45.96	60.64	-14.68	QP	
3	0.4700	27.99	17.84	45.83	56.51	-10.68	QP	
4	0.4740	21.24	17.84	39.08	46.44	-7.36	AVG	
5	0.6419	18.73	17.86	36.59	46.00	-9.41	AVG	
6	0.6660	26.79	17.87	44.66	56.00	-11.34	QP	
7	0.8260	25.89	17.86	43.75	56.00	-12.25	QP	
8	0.8540	17.02	17.86	34.88	46.00	-11.12	AVG	
9	1.0100	24.50	17.85	42.35	56.00	-13.65	QP	
10	1.1900	14.09	17.84	31.93	46.00	-14.07	AVG	
11	27.9580	15.85	18.99	34.84	50.00	-15.16	AVG	
12	28.3900	26.20	18.97	45.17	60.00	-14.83	QP	

Note: Result = Reading + Factor Over Limit = Result - Limit



Conducted Emission Test Data

Test Site: 1# Shielded Room
Operating Condition: Mode 2
Test Specification: AC 230V, 50Hz for adapter
Comment: Neutral Line
Temp.(°C)/Hum.(%RH): 26.3°C/59%RH



No.	Freq. (MHz)	Reading (dBuV)	Factor (dB)	Result (dBuV)	Limit (dBuV)	Over Limit (dB)	Detector	Remark
1	0.2819	27.76	17.83	45.59	60.76	-15.17	QP	
2	0.2819	22.56	17.83	40.39	50.76	-10.37	AVG	
3	0.4700	26.44	17.84	44.28	56.51	-12.23	QP	
4	0.4700	19.03	17.84	36.87	46.51	-9.64	AVG	
5	0.6540	26.17	17.87	44.04	56.00	-11.96	QP	
6	0.6620	17.63	17.87	35.50	46.00	-10.50	AVG	
7	0.8540	24.21	17.86	42.07	56.00	-13.93	QP	
8	0.8540	15.30	17.86	33.16	46.00	-12.84	AVG	
9	1.0300	24.43	17.85	42.28	56.00	-13.72	QP	
10	1.2180	12.72	17.84	30.56	46.00	-15.44	AVG	
11	6.7100	26.72	17.86	44.58	60.00	-15.42	QP	
12	7.4460	15.35	17.88	33.23	50.00	-16.77	AVG	

Note: Result = Reading + Factor Over Limit = Result - Limit



3.2. Wired Network Ports Conducted Emission Test

3.2.1. Test Standard and Limit

Test Standard	ETSI EN 301 489-1 Clause 8.7
Basic Standard	EN 55032

☐ Limits for asymmetric mode conducted emissions of Class A equipment

Frequency (MHz)	Limits (dB μ V)	
	Quasi-peak Level	Average Level
0.15 ~ 0.50	97.0 ~ 87.0 *	87.0 ~ 74.0 *
0.50 ~ 30.00	87.0	74.0

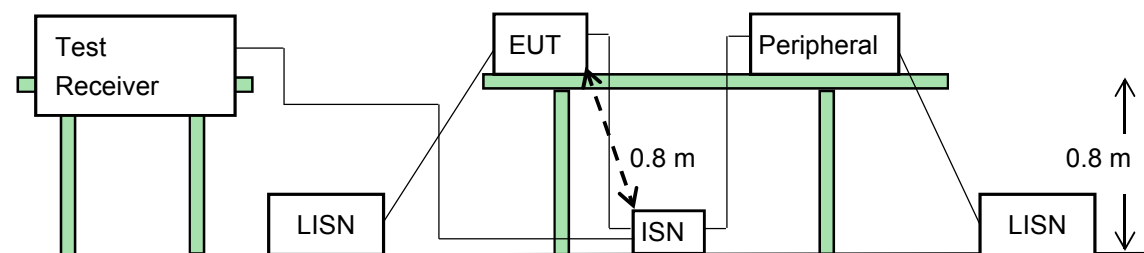
Remark:
The limit decreases linearly with the logarithm of the frequency in the range 0.15MHz to 0.50MHz.

☐ Limits for asymmetric mode conducted emissions of Class B equipment

Frequency (MHz)	Limits (dB μ V)	
	Quasi-peak Level	Average Level
0.15 ~ 0.50	84.0 ~ 74.0 *	74.0 ~ 64.0 *
0.50 ~ 30.00	74.0	64.0

Remark:
The limit decreases linearly with the logarithm of the frequency in the range 0.15MHz to 0.50MHz.

3.2.2. Test Setup



3.2.3. Test Procedure

The EUT is put on the plane 0.8 m high above the ground by insulating support and connected to the wired network ports through Impedance Stabilization Network(ISN). and it is investigated to find out the maximum conducted emission according to the EN55032 regulations during conducted emission measurement.

The bandwidth of test receiver (ESCI) set at 9kHz.

The frequency range from 150kHz to 30MHz is checked.

3.2.4. Test Results

Not applicable.



3.3. Radiated Emission Test

3.3.1. Test Standard and Limit

Test Standard	ETSI EN 301 489-1 Clause 8.2
Basic Standard	EN 55032

☐ Limit for radiated emissions at frequencies up to 1 GHz for class A equipment

Frequency (MHz)	Distance (Meters)	Limit (dB μ V/m)
30 ~ 230	3	50
230 ~ 1000	3	57
Remark: The lower limit shall apply at the transition frequencies.		

☐ Limit for radiated emissions at frequencies above 1 GHz for class A equipment

Frequency (MHz)	Distance (Meters)	Limit (dB μ V/m)	
		Peak	Average
1000 MHz -3000 MHz	3	76	56
3000 MHz -6000 MHz	3	80	60
Remark: The lower limit shall apply at the transition frequencies.			

☒ Limit for radiated emissions at frequencies up to 1 GHz for class B equipment

Frequency (MHz)	Distance (Meters)	Limit (dB μ V/m)
30 ~ 230	3	40
230 ~ 1000	3	47
Remark: The lower limit shall apply at the transition frequencies.		



☐ Limit for radiated emissions at frequencies above 1 GHz for class B equipment

Frequency (MHz)	Distance (Meters)	Limit (dB μ V/m)	
		Peak	Average
1000 MHz -3000 MHz	3	70	50
3000 MHz -6000 MHz	3	74	54

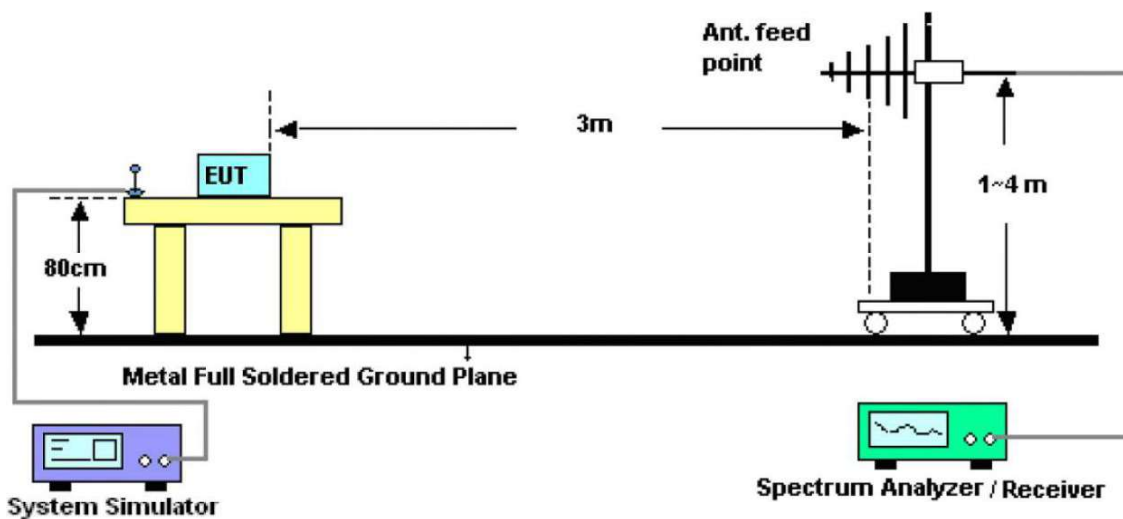
Remark: The lower limit shall apply at the transition frequencies.

☐ Radiated emission test limit for FM receivers

Frequency (MHz)	Distance (Meters)	Limit (dB μ V/m)	
		Fundamental	Harmonics
30MHz~230MHz	3	60	52
230MHz~300MHz	3	60	52
300MHz~1000MHz	3	60	56

Remark: The lower limit shall apply at the transition frequency.

3.3.2. Test Setup



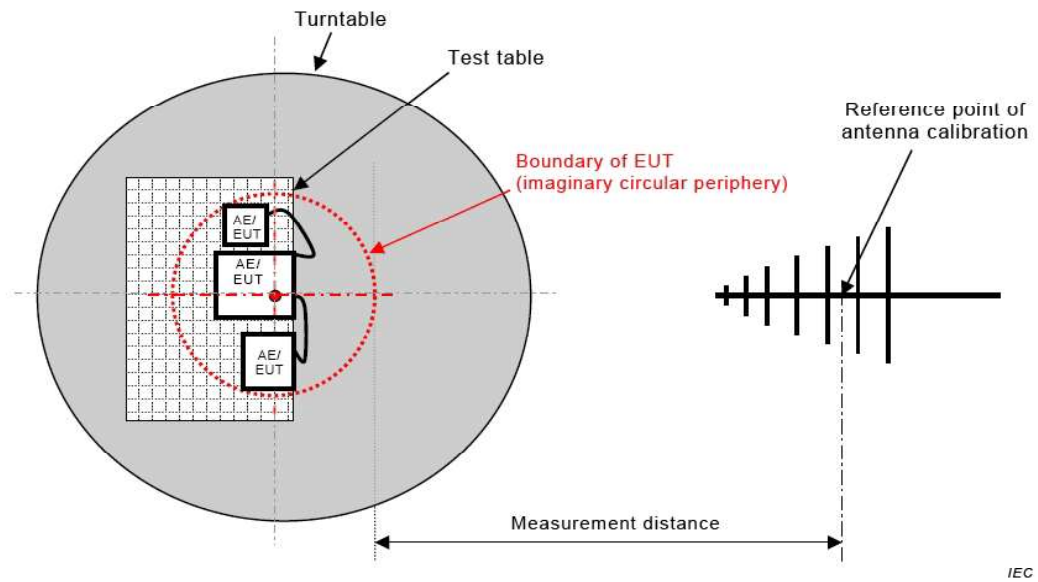
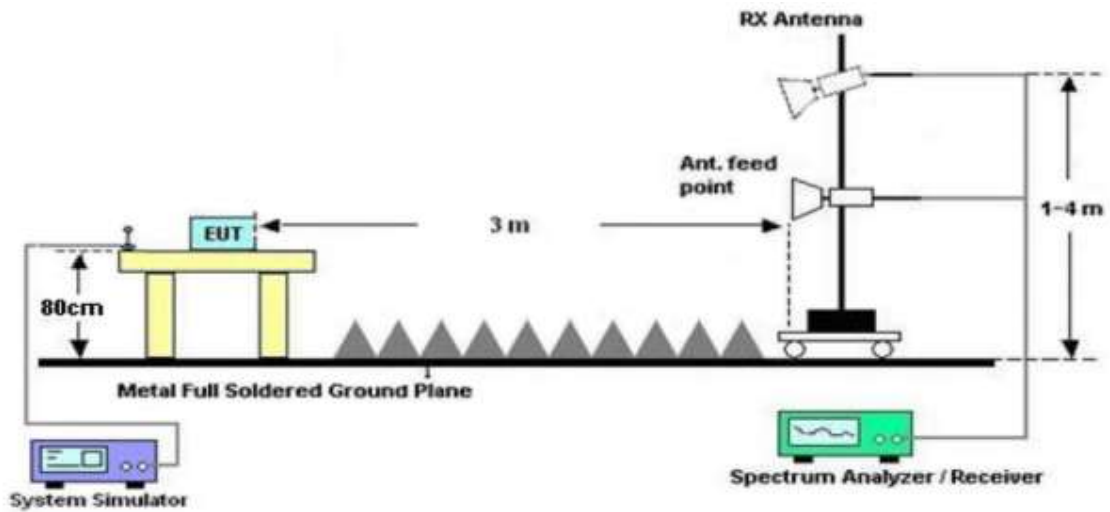


Figure C.1 – Measurement distance

30MHz to 1GHz



Above 1 GHz

3.3.3. Test Procedure

- 1) The measuring distance of at 3 m shall be used for measurements at frequency up to 1GHz. For frequencies above 1GHz, any suitable measuring distance may be used.
- 2) The EUT was placed on the top of a rotating table 0.8 meters above the ground at a 3 meter test site. The table was rotated 360 degrees to determine the position of the highest radiation.
- 3) The height of the equipment or of the substitution antenna shall be 0.8 m; the height of the test antenna shall vary between 1 m to 4 m. Both horizontal and vertical polarizations of the antenna are set to make the measurement.
- 4) The initial step in collecting radiated emission data is a spectrum analyzer peak detector mode pre-scanning the measurement frequency range. Significant peaks are then marked and then Quasi Peak detector mode re-measured.
- 5) The test-receiver system was set to quasi-peak detect function and specified bandwidth with maximum hold mode when the test frequency is below 1GHz.

The test receiver/spectrum was set to peak and average detect function and specified bandwidth with maximum hold mode when the test frequency is above 1GHz.

Note:

The resolution bandwidth of test receiver/spectrum analyzer is 120kHz for Quasi-peak detection (QP) at frequency below 1GHz.

The resolution bandwidth is 1MHz and video bandwidth of test receiver/spectrum analyzer is 3MHz for Peak/ Average detection at frequency above 1GHz.

3.3.4. Test Data

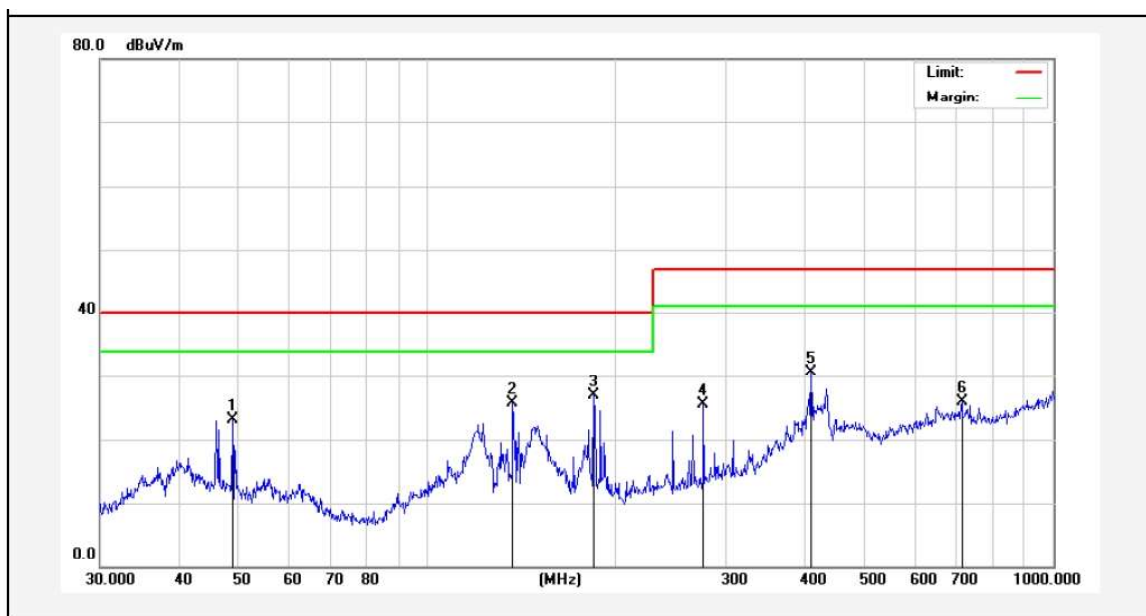
PASS

Only the worst case data was showed in the report, please to see the following pages.



Test Results (30~1000MHz)

Test Mode: Mode 1
 Power Source: AC 230V, 50Hz for adapter
 Polarization: Horizontal
 Temp.(°C)/Hum.(%RH): 22.5°C/55%RH



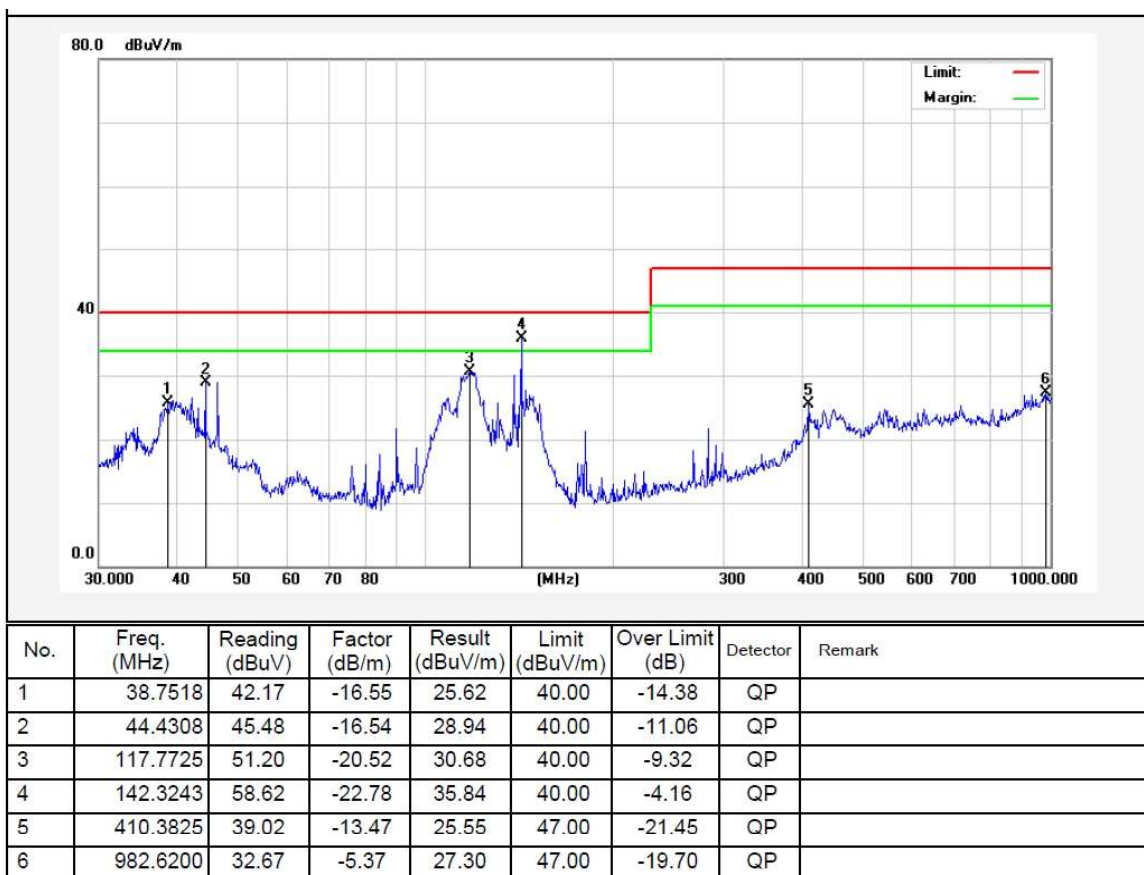
No.	Freq. (MHz)	Reading (dBuV)	Factor (dB/m)	Result (dBuV/m)	Limit (dBuV/m)	Over Limit (dB)	Detector	Remark
1	48.8429	40.20	-17.13	23.07	40.00	-16.93	QP	
2	136.9391	48.38	-22.72	25.66	40.00	-14.34	QP	
3	184.4898	47.90	-21.00	26.90	40.00	-13.10	QP	
4	276.1235	43.06	-17.51	25.55	47.00	-21.45	QP	
5	410.3825	44.24	-13.47	30.77	47.00	-16.23	QP	
6	714.1734	34.60	-8.74	25.86	47.00	-21.14	QP	

Note: Result = Reading + Factor Over Limit = Result - Limit



Test Results (30~1000MHz)

Test Mode: Mode 1
Power Source: AC 230V, 50Hz for adapter
Polarization: Vertical
Temp.(°C)/Hum.(%RH): 22.5°C/55%RH



Note: Result = Reading + Factor Over Limit = Result - Limit



4. Immunity Test

Performance criteria for ETSI EN 301 489-3:

Table 2: Performance Requirements

Criterion	During test	After test
A	Operate as intended No loss of function No unintentional responses	Operate as intended No loss of function No degradation of performance No loss of stored data or user programmable functions
B	May show loss of function No unintentional responses	Operate as intended Lost function(s) shall be self-recoverable No degradation of performance No loss of stored data or user programmable functions

11
%
—
15
11



61000-4-2, and its cables were isolated from the Ground Reference Plane by an insulating support of 0.1-meter thickness. The GRP consisted of a sheet of aluminum that is at least 0.25mm thick, and 2.5meters square connected to the protective grounding system and extended at least 0.5 meters from the EUT on all sides.

4.1.3. Test Procedure

The test generator necessary to perform direct and indirect application of discharges to the EUT in the following manner:

- 1) Contact discharge was applied to conductive surfaces and coupling planes of the EUT.

During the test, it was performed with single discharges. For the single discharge time between successive single discharges was at least 1 second.

Vertical Coupling Plane (VCP):

The coupling plane, of dimensions 0.5m x 0.5m, is placed parallel to, and positioned at a distance 0.1m from, the EUT, with the Discharge Electrode touching the coupling plane.

The four faces of the EUT will be performed with electrostatic discharge.

Horizontal Coupling Plane (HCP):

The coupling plane is placed under to the EUT. The generator shall be positioned vertically at a distance of 0.1m from the EUT, with the Discharge Electrode touching the coupling plane.

The four faces of the EUT will be performed with electrostatic discharge.

- 2) Air discharges at insulation surfaces of the EUT.

It was at least ten single discharges with positive and negative at the same selected point.

4.1.4. Test Data

Pass

Only the worst case data was showed in the report, please to see the following pages.

0
A
P
A



Electrostatic Discharge Test Results				
Test Mode:	Please refers to clause 1.4			
Temp.(°C)/Hum.(%RH) :	Tem.: 25.1°C Hum.: 56%			
Test mode for EN 301489-3 standard				
Test Voltage	Coupling	Observation	Perform. Criteria	Results
±2KV, ±4kV	Contact Discharge	A	B	PASS
±2KV, ±4kV, ±8kV	Air Discharge	A	B	PASS
±2KV, ±4kV	Indirect Discharge HCP	A	B	PASS
±2KV, ±4kV	Indirect Discharge VCP	A	B	PASS

11 / 31

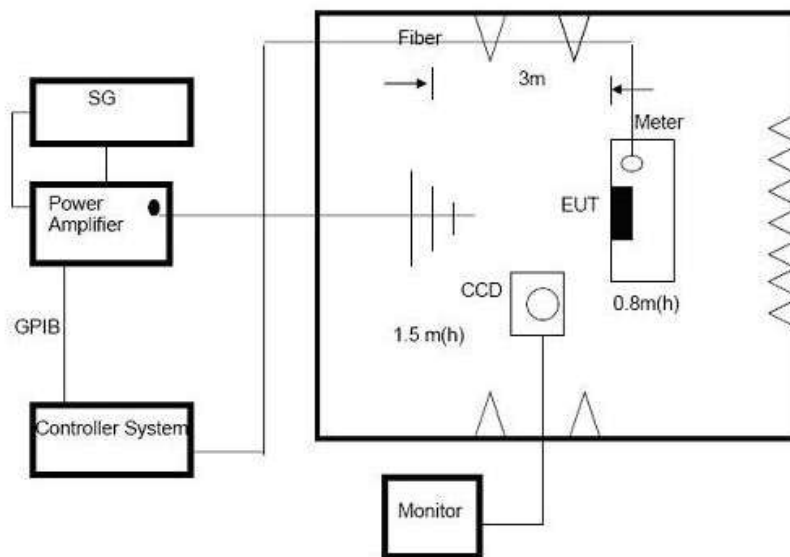


4.2. Radiated, RF Electromagnetic Fields Test

4.2.1. Test Standard and Specification

Test Standard	ETSI EN 301 489-1 Clause 9.2
Basic Standard	EN 61000-4-3
Required Performance	A
Frequency Range	80MHz to 6000MHz
Field Strength	3 V/m
Modulation	1kHz Sine Wave, 80%, AM Modulation
Frequency Step	1 % of preceding frequency value
Polarity of Antenna	Horizontal and Vertical
Test Distance	3 m
Antenna Height	1.5 m
Dwell Time	at least 0.5s

4.2.2. Test Setup



4.2.3. Test Procedure

The EUT and support equipment, which are placed on a table that is 0.8 meter above ground and the testing was performed in a fully-anechoic chamber. The testing distance from antenna to the EUT was 3 meters.

- 1) The field strength level was 3V/m
- 2) The frequency range is swept from 80 MHz to 6000 MHz with the signal 80%amplitude modulated with a 1kHz sine wave.
- 3) The dwell time at each frequency shall be not less than the time necessary for the EUT to be able to respond, but shall in no case be less than 0.5s.

4) The test was performed with the EUT exposed to both vertically and horizontally polarized fields on each of the four sides.

4.2.4. Test Data

Pass

Only the worst case data was showed in the report, please to see the following page.

Radiated, RF Electromagnetic Fields Test Results						
Test Mode:		Please refers to clause 1.4				
Temp.(°C)/Hum.(%RH):		Tem.: 24.7°C Hum.: 53%				
Test mode for EN 301489-3 standard						
Frequency Range (MHz)	RF Field Position	R.F. Field Strength	Azimuth	Observation	Perform. Criteria	Results
80~6000	H / V	3 V/m (rms) AM Modulated 1000Hz, 80%	Front	A	A	PASS
			Rear	A	A	PASS
			Left	A	A	PASS
			Right	A	A	PASS

11
12
13
14
15
16
17
18
19
20
21
22
23
24
25
26
27
28
29
30
31
32
33
34
35
36
37
38
39
40
41
42
43
44
45
46
47
48
49
50
51
52
53
54
55
56
57
58
59
60
61
62
63
64
65
66
67
68
69
70
71
72
73
74
75
76
77
78
79
80
81
82
83
84
85
86
87
88
89
90
91
92
93
94
95
96
97
98
99
100
101
102
103
104
105
106
107
108
109
110
111
112
113
114
115
116
117
118
119
120
121
122
123
124
125
126
127
128
129
130
131
132
133
134
135
136
137
138
139
140
141
142
143
144
145
146
147
148
149
150
151
152
153
154
155
156
157
158
159
160
161
162
163
164
165
166
167
168
169
170
171
172
173
174
175
176
177
178
179
180
181
182
183
184
185
186
187
188
189
190
191
192
193
194
195
196
197
198
199
200
201
202
203
204
205
206
207
208
209
210
211
212
213
214
215
216
217
218
219
220
221
222
223
224
225
226
227
228
229
230
231
232
233
234
235
236
237
238
239
240
241
242
243
244
245
246
247
248
249
250
251
252
253
254
255
256
257
258
259
260
261
262
263
264
265
266
267
268
269
270
271
272
273
274
275
276
277
278
279
280
281
282
283
284
285
286
287
288
289
290
291
292
293
294
295
296
297
298
299
300
301
302
303
304
305
306
307
308
309
310
311
312
313
314
315
316
317
318
319
320
321
322
323
324
325
326
327
328
329
330
331
332
333
334
335
336
337
338
339
340
341
342
343
344
345
346
347
348
349
350
351
352
353
354
355
356
357
358
359
360
361
362
363
364
365
366
367
368
369
370
371
372
373
374
375
376
377
378
379
380
381
382
383
384
385
386
387
388
389
390
391
392
393
394
395
396
397
398
399
400
401
402
403
404
405
406
407
408
409
410
411
412
413
414
415
416
417
418
419
420
421
422
423
424
425
426
427
428
429
430
431
432
433
434
435
436
437
438
439
440
441
442
443
444
445
446
447
448
449
450
451
452
453
454
455
456
457
458
459
460
461
462
463
464
465
466
467
468
469
470
471
472
473
474
475
476
477
478
479
480
481
482
483
484
485
486
487
488
489
490
491
492
493
494
495
496
497
498
499
500
501
502
503
504
505
506
507
508
509
510
511
512
513
514
515
516
517
518
519
520
521
522
523
524
525
526
527
528
529
530
531
532
533
534
535
536
537
538
539
540
541
542
543
544
545
546
547
548
549
550
551
552
553
554
555
556
557
558
559
560
561
562
563
564
565
566
567
568
569
570
571
572
573
574
575
576
577
578
579
580
581
582
583
584
585
586
587
588
589
590
591
592
593
594
595
596
597
598
599
600
601
602
603
604
605
606
607
608
609
610
611
612
613
614
615
616
617
618
619
620
621
622
623
624
625
626
627
628
629
630
631
632
633
634
635
636
637
638
639
640
641
642
643
644
645
646
647
648
649
650
651
652
653
654
655
656
657
658
659
660
661
662
663
664
665
666
667
668
669
670
671
672
673
674
675
676
677
678
679
680
681
682
683
684
685
686
687
688
689
690
691
692
693
694
695
696
697
698
699
700
701
702
703
704
705
706
707
708
709
710
711
712
713
714
715
716
717
718
719
720
721
722
723
724
725
726
727
728
729
730
731
732
733
734
735
736
737
738
739
740
741
742
743
744
745
746
747
748
749
750
751
752
753
754
755
756
757
758
759
760
761
762
763
764
765
766
767
768
769
770
771
772
773
774
775
776
777
778
779
780
781
782
783
784
785
786
787
788
789
790
791
792
793
794
795
796
797
798
799
800
801
802
803
804
805
806
807
808
809
810
811
812
813
814
815
816
817
818
819
820
821
822
823
824
825
826
827
828
829
830
831
832
833
834
835
836
837
838
839
840
841
842
843
844
845
846
847
848
849
850
851
852
853
854
855
856
857
858
859
860
861
862
863
864
865
866
867
868
869
870
871
872
873
874
875
876
877
878
879
880
881
882
883
884
885
886
887
888
889
890
891
892
893
894
895
896
897
898
899
900
901
902
903
904
905
906
907
908
909
910
911
912
913
914
915
916
917
918
919
920
921
922
923
924
925
926
927
928
929
930
931
932
933
934
935
936
937
938
939
940
941
942
943
944
945
946
947
948
949
950
951
952
953
954
955
956
957
958
959
960
961
962
963
964
965
966
967
968
969
970
971
972
973
974
975
976
977
978
979
980
981
982
983
984
985
986
987
988
989
990
991
992
993
994
995
996
997
998
999
1000
1001
1002
1003
1004
1005
1006
1007
1008
1009
1010
1011
1012
1013
1014
1015
1016
1017
1018
1019
1020
1021
1022
1023
1024
1025
1026
1027
1028
1029
1030
1031
1032
1033
1034
1035
1036
1037
1038
1039
1040
1041
1042
1043
1044
1045
1046
1047
1048
1049
1050
1051
1052
1053
1054
1055
1056
1057
1058
1059
1060
1061
1062
1063
1064
1065
1066
1067
1068
1069
1070
1071
1072
1073
1074
1075
1076
1077
1078
1079
1080
1081
1082
1083
1084
1085
1086
1087
1088
1089
1090
1091
1092
1093
1094
1095
1096
1097
1098
1099
1100
1101
1102
1103
1104
1105
1106
1107
1108
1109
1110
1111
1112
1113
1114
1115
1116
1117
1118
1119
1120
1121
1122
1123
1124
1125
1126
1127
1128
1129
1130
1131
1132
1133
1134
1135
1136
1137
1138
1139
1140
1141
1142
1143
1144
1145
1146
1147
1148
1149
1150
1151
1152
1153
1154
1155
1156
1157
1158
1159
1160
1161
1162
1163
1164
1165
1166
1167
1168
1169
1170
1171
1172
1173
1174
1175
1176
1177
1178
1179
1180
1181
1182
1183
1184
1185
1186
1187
1188
1189
1190
1191
1192
1193
1194
1195
1196
1197
1198
1199
1200
1201
1202
1203
1204
1205
1206
1207
1208
1209
1210
1211
1212
1213
1214
1215
1216
1217
1218
1219
1220
1221
1222
1223
1224
1225
1226
1227
1228
1229
1230
1231
1232
1233
1234
1235
1236
1237
1238
1239
1240
1241
1242
1243
1244
1245
1246
1247
1248
1249
1250
1251
1252
1253
1254
1255
1256
1257
1258
1259
1260
1261
1262
1263
1264
1265
1266
1267
1268
1269
1270
1271
1272
1273
1274
1275
1276
1277
1278
1279
1280
1281
1282
1283
1284
1285
1286
1287
1288
1289
1290
1291
1292
1293
1294
1295
1296
1297
1298
1299
1300
1301
1302
1303
1304
1305
1306
1307
1308
1309
1310
1311
1312
1313
1314
1315
1316
1317
1318
1319
1320
1321
1322
1323
1324
1325
1326
1327
1328
1329
1330
1331
1332
1333
1334
1335
1336
1337
1338
1339
1340
1341
1342
1343
1344
1345
1346
1347
1348
1349
1350
1351
1352
1353
1354
1355
1356
1357
1358
1359
1360
1361
1362
1363
1364
1365
1366
1367
1368
1369
1370
1371
1372
1373
1374
1375
1376
1377
1378
1379
1380
1381
1382
1383
1384
1385
1386
1387
1388
1389
1390
1391
1392
1393
1394
1395
1396
1397
1398
1399
1400
1401
1402
1403
1404
1405
1406
1407
1408
1409
1410
1411
1412
1413
1414
1415
1416
1417
1418
1419
1420
1421
1422
1423
1424
1425
1426
1427
1428
1429
1430
1431
1432
1433
1434
1435
1436
1437
1438
1439
1440
1441
1442
1443
1444
1445
1446
1447
1448
1449
1450
1451
1452
1453
1454
1455
1456
1457
1458
1459
1460
1461
1462
1463
1464
1465
1466
1467
1468
1469
1470
1471
1472
1473
1474
1475
1476
1477
1478
1479
1480
1481
1482
1483
1484
1485
1486
1487
1488
1489
1490
1491
1492
1493
1494
1495
1496
1497
1498
1499
1500
1501
1502
1503
1504
1505
1506
1507
1508
1509
1510
1511
1512
1513
1514
1515
1516
1517
1518
1519
1520
1521
1522
1523
1524
1525
1526
1527
1528
1529
1530
1531
1532
1533
1534
1535
1536
1537
1538
1539
1540
1541
1542
1543
1544
1545
1546
1547
1548
1549
1550
1551
1552
1553
1554
1555
1556
1557
1558
1559
1560
1561
1562
1563
1564
1565
1566
1567
1568
1569
1570
1571
1572
1573
1574
1575
1576
1577
1578
1579
1580
1581
1582
1583
1584
1585
1586
1587
1588
1589
1590
1591
1592
1593
1594
1595
1596
1597
1598
1599
1600
1601
1602
1603
1604
1605
1606
1607
1608
1609
1610
1611
1612
1613
1614
1615
1616
1617
1618
1619
1620
1621
1622
1623
1624
1625
1626
1627
1628
1629
1630
1631
1632
1633
1634
1635
1636
1637
1638
1639
1640
1641
1642
1643
1644
1645
1646
1647
1648
1649
1650
1651
1652
1653
1654
1655
1656
1657
1658
1659
1660
1661
1662
1663
1664
1665
1666
1667
1668
1669
1670
1671
1672
1673
1674
1675
1676
1677
1678
1679
1680
1681
1682
1683
1684
1685
1686
1687
1688
1689
1690
1691
1692
1693
1694
1695
1696
1697
1698
1699
1700
1701
1702
1703
1704
1705
1706
1707
1708
1709
1710
1711
1712
1713
1714
1715
1716
1717
1718
1719
1720
1721
1722
1723
1724
1725
1726
1727
1728
1729
1730
1731
1732
1733
1734
1735
1736
1737
1738
1739
1740
1741
1742
1743
1744
1745
1746
1747
1748
1749
1750
1751
1752
1753
1754
1755
1756
1757
1758
1759
1760
1761
1762
1763
1764
1765
1766
1767
1768
1769
1770
1771
1772
1773
1774
1775
1776
1777
1778
1779
1780
1781
1782
1783
1784
1785
1786
1787
1788
1789
1790
1791
1792
1793
1794
1795
1796
1797
1798
1799
1800
1801
1802
1803
1804
1805
1806
1807
1808
1809
1810
1811
1812
1813
1814
1815
1816
1817
1818
1819
1820
1821
1822
1823
1824
1825
1826
1827
1828
1829
1830
1831
1832
1833
1834
1835
1836
1837
1838
1839
1840
1841
1842
1843
1844
1845
1846
1847
1848
1849
1850
1851
1852
1853
1854
1855
1856
1857
1858
1859
1860
1861
1862
1863
1864
1865
1866
1867
1868
1869
1870
1871
1872
1873
1874
1875
1876
1877
1878
1879
1880
1881
1882
1883
1884
1885
1886
1887
1888
1889
1890
1891
1892
1893
1894
1895
1896
1897
1898
1899
1900
1901
1902
1903
1904
1905
1906
1907
1908
1909
1910
1911
1912
1913
1914
1915
1916
1917
1918
1919
1920
1921
1922
1923
1924
1925
1926
1927
1928
1929
1930
1931
1932
1933
1934
1935
1936
1937
1938
1939
1940
1941
1942
1943
1944
1945
1946
1947
1948
1949
1950
1951
1952
1953
1954
1955
1956
1957
1958
1959
1960
1961
1962
1963
1964
1965
1966
1967
1968
1969
1970
1971
1972
1973
1974
1975
1976
1977
1978
1979
1980
1981
1982
1983
1984
1985
1986
1987
1988
1989
1990
1991
1992
1993
1994
1995
1996
1997
1998
1999
2000
2001
2002
2003
2004
2005
2006
2007
2008
2009
2010
2011
2012
2013
2014
2015
2016
2017
2018
2019
2020
2021
2022
2023
2024
2025
2026
2027
2028
2029
2030
2031
2032
2033
2034
2035
2036
2037
2038
2039
2040
2041
2042
2043
2044
2045
2046
2047
2048
2049
2050
2051
2052
2053
2054
2055
2056
2057
2058
2059
2060
2061
2062
2063
2064
2065
2066
2067
2068
2069
2070
2071
2072

APPENDIX I -- TEST SETUP PHOTOGRAPH

Photo of Power Line Conducted Emission Test

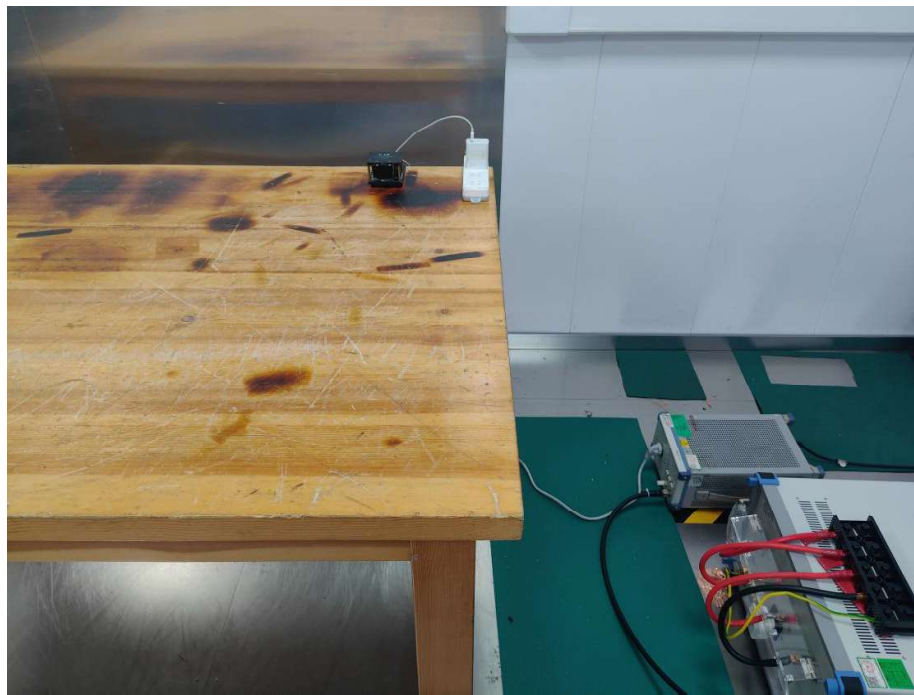


Photo of Radiation Emission Test (Below 1GHz)



Photo of Electrostatic Discharge Test

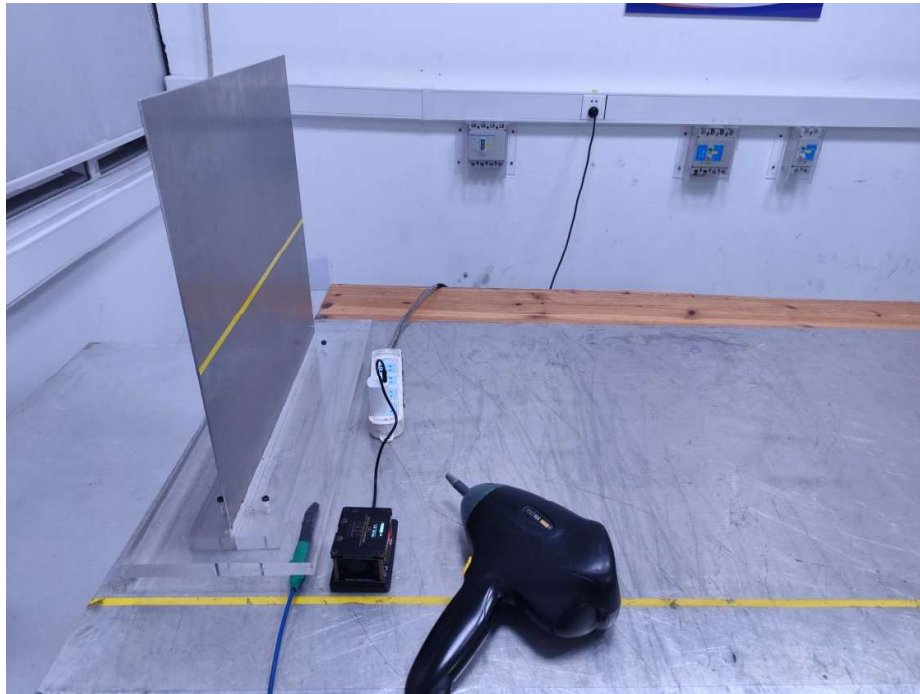
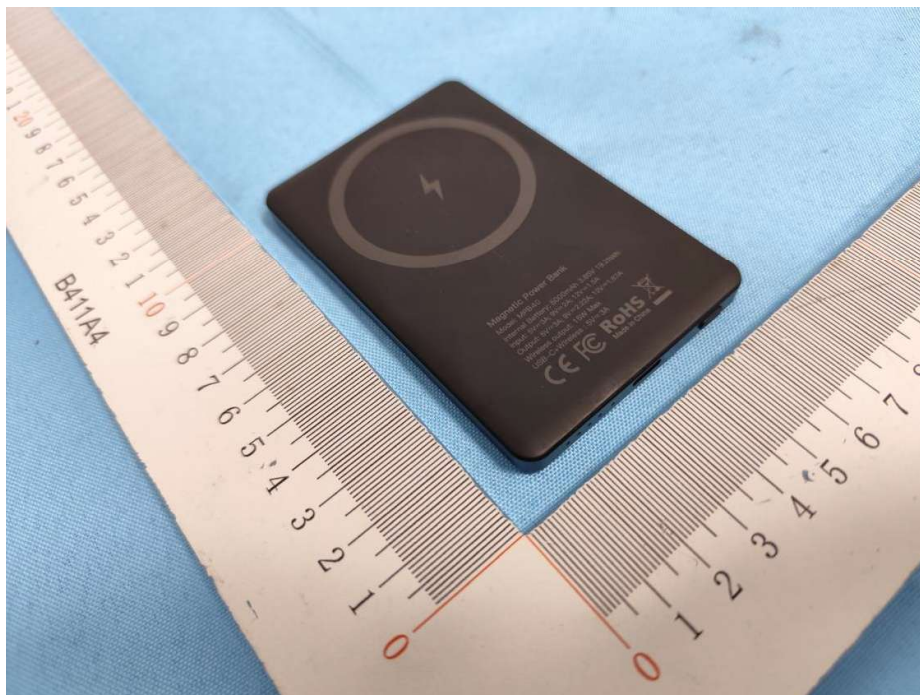
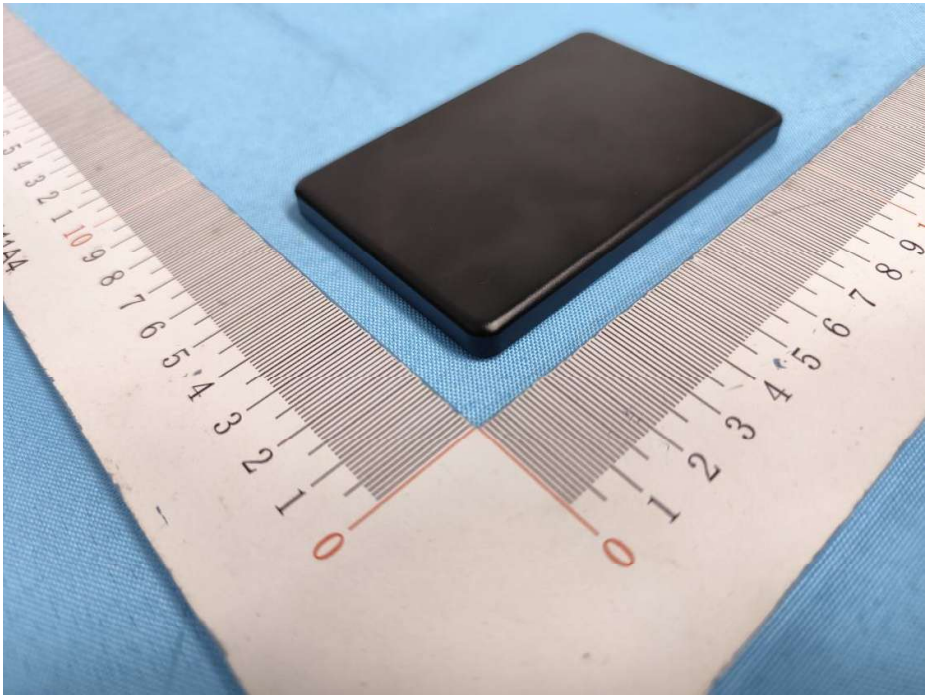


Photo of RF Field Strength Susceptibility Test



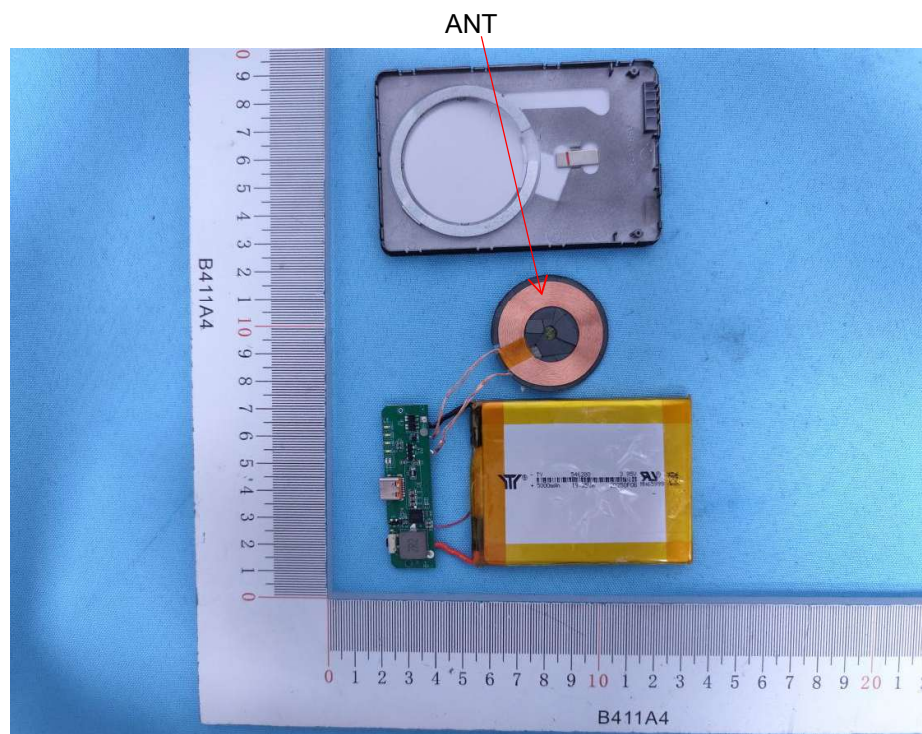
APPENDIX II -- EXTERNAL PHOTOGRAPH



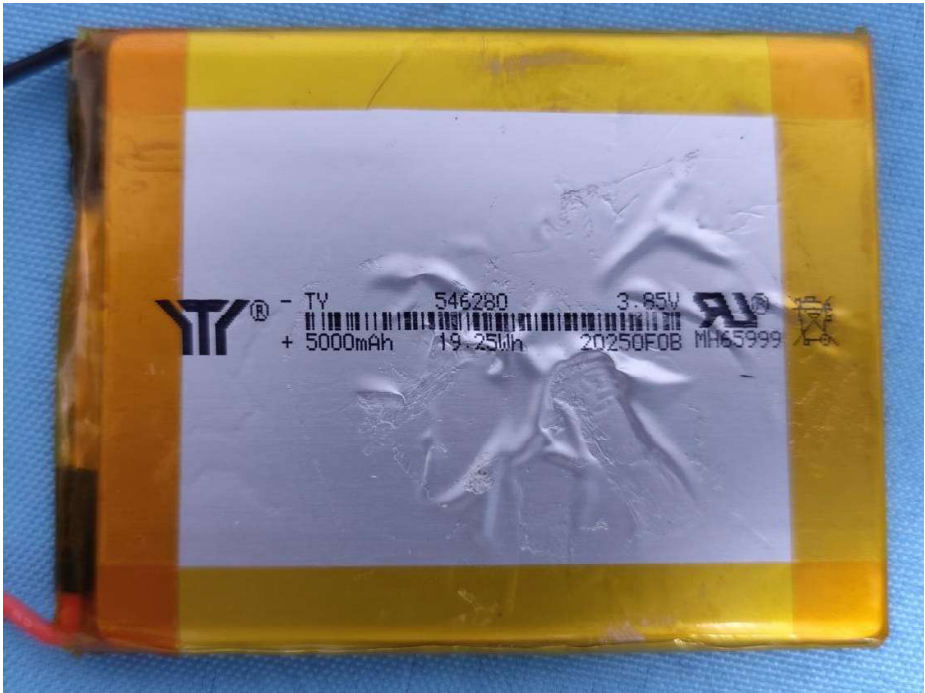
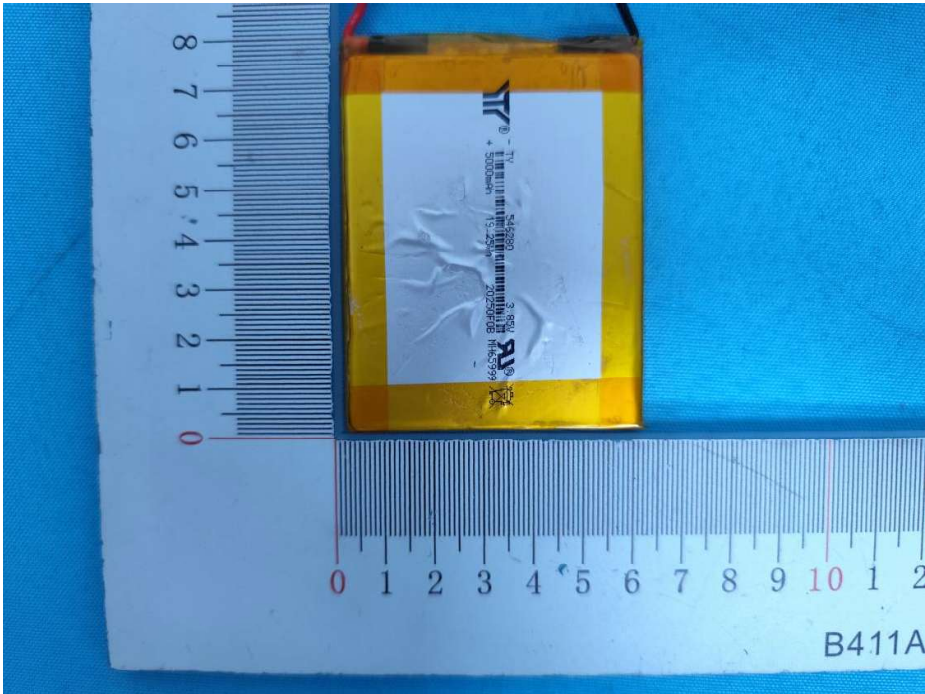


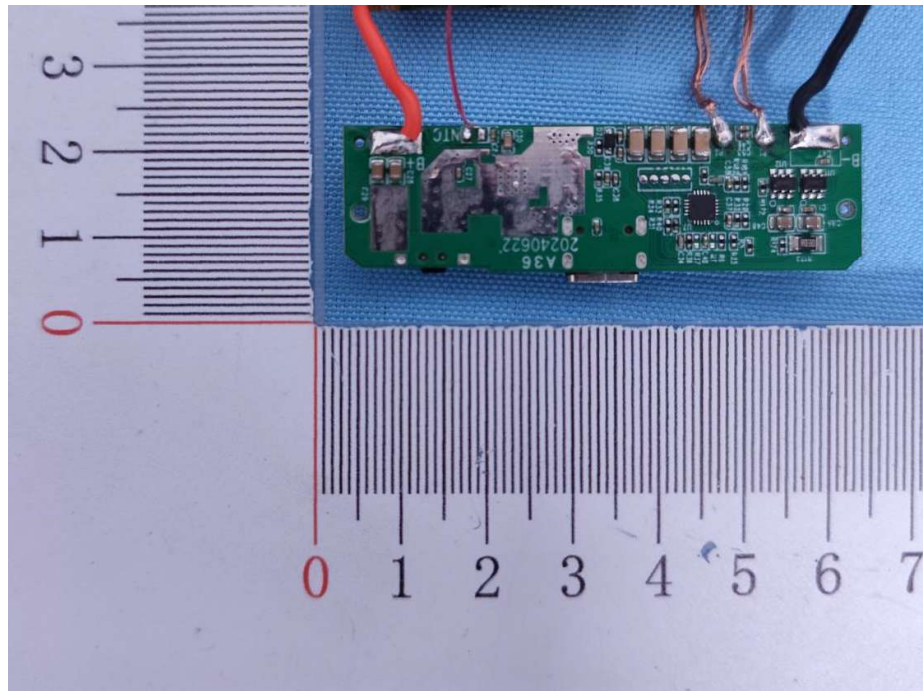
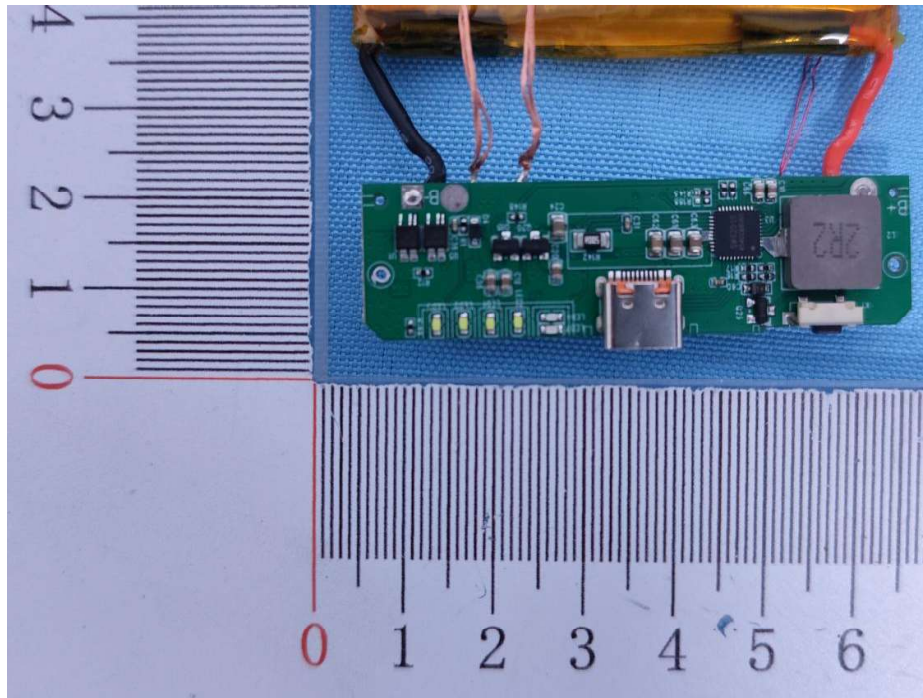


APPENDIX III -- INTERNAL PHOTOGRAPH



ator / i.





----- End of Report -----